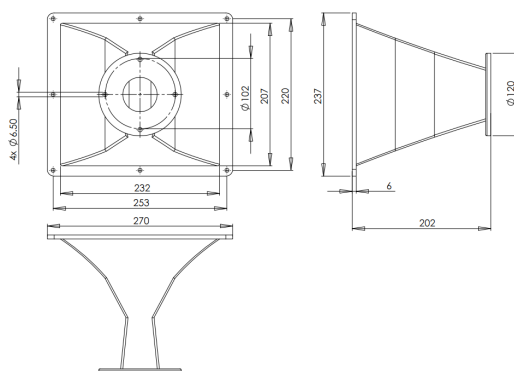


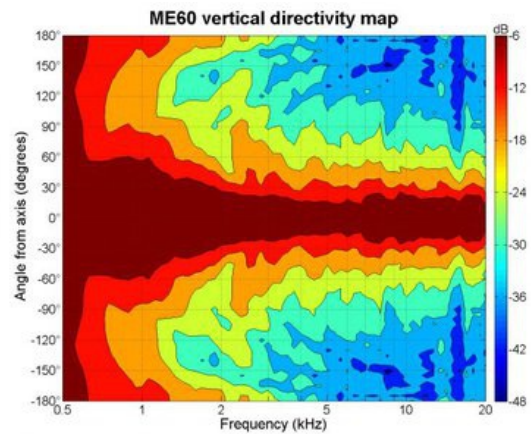
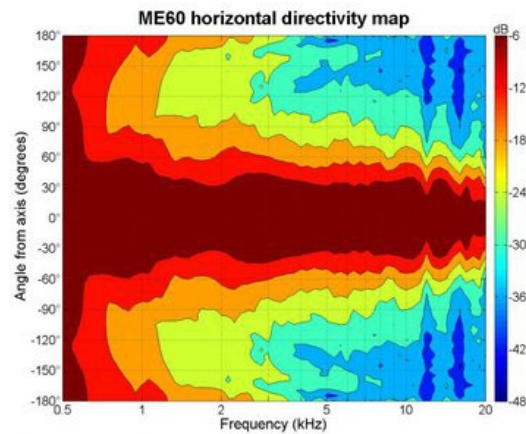
ME60

0Ω**Horns - 2.0 Inches**

- 2" throat entry
- 60° x 40° nominal coverage
- Constant Directivity
- Very good loading down to 800 Hz

ME60

Horns- 2.0 Inches



SPECIFICATIONS¹

Throat Diameter	50 mm (2.0 in)
Nominal Coverage Horizontal	60 °
Nominal Coverage Vertical	40 °
Cutoff Frequency	0.8 kHz
Material	Cast Aluminium
Dimensions	270x237x202 mm (10.6x9.3x7.9 in)

MOUNTING AND SHIPPING INFO

Baffle Cutout Dimension	232x207 mm (9.1x8.1 in)
Net Weight	1.6 kg (3.5 lb)
Shipping Units	1
Shipping Weight	2.2 kg (4.8 lb)
Shipping Box	290x260x260 mm (11.4x10.2x10.2 in)

1. Horn mounted on B&C DE 750 compression driver.