

TASCAM

D01236020G

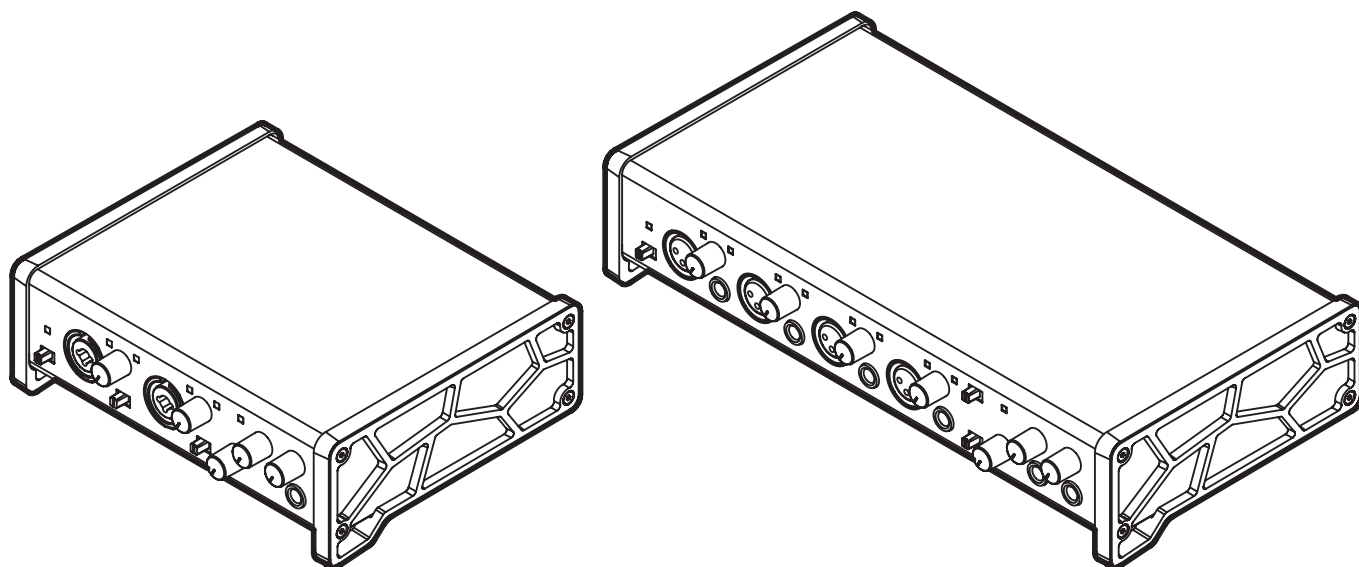
US-2x2

US-4x4

USB Audio/MIDI Interface



REFERENCE MANUAL



Before connecting this unit to a computer, you must download and install dedicated software on the computer.

Contents

1 – Introduction	3	Notification function.....	17
Features	3	Automatic Settings Panel and firmware update function.....	17
Conventions used in this manual	3	7 – Application Guide	18
Trademarks and copyrights.....	3	DAW software.....	18
Using the TEAC Global Site	3	Bundled DAW software	18
2 – Names and functions of parts	4	Other DAW software.....	18
Front panel	4	Driver settings for specific purposes (Windows only) .	18
Rear panel	5	Windows Media Player	18
3 – Installation	6	Mac OS X and iTunes.....	19
System requirements.....	6	8 – Standalone Mode	20
Windows	6	Overview	20
Mac OS X	6	Settings in standalone mode.....	20
Apple iOS devices	6	Settings Panel settings	20
Supported audio drivers	6	9 – MIDI Implementation Chart	21
Installing the dedicated software	6	10 – Troubleshooting	22
Installing the Windows dedicated software.....	6	11 – Specifications	24
Installing the Mac dedicated software	7	Audio resolution.....	24
Working with Gatekeeper.....	8	Input/output ratings	24
Uninstalling the dedicated software.....	9	Analog inputs.....	24
Uninstalling the Windows dedicated software...9		Analog outputs.....	24
Uninstalling the Mac dedicated software	9	Control input/output ratings.....	24
4 – Preparation.....	10	Audio performance	24
Connecting the power	10	Computer system requirements.....	25
Changing the outlet plug (US-4x4 only)	10	Windows	25
5 – Connections.....	11	Mac.....	25
Connecting other equipment	11	iOS devices	25
Computer connections	11	Supported audio drivers	25
Audio connections.....	11	General.....	25
Microphones	11	Dimensional drawings.....	25
Guitar.....	11		
Electronic instruments and other audio equipment.....	12		
Analog record players	12		
Monitor speakers	12		
Headphones	12		
MIDI connections	12		
Connecting with iOS devices.....	12		
6 – Using the Settings Panel	13		
Opening the Settings Panel	13		
Windows	13		
Mac.....	13		
Windows Settings Panel overview.....	13		
HOME page	13		
Settings page	14		
Custom page	15		
Mac Settings Panel overview.....	16		

1 – Introduction

Features

- 24-bit/96kHz audio interface
- Multiple¹ analog signals (L/R) can be input simultaneously and output to a computer by USB at the same time
- Multiple XLR mic inputs (balanced²) and standard TRS jack inputs (balanced³/unbalanced⁴)
- Electric guitars and basses, for example, can be connected to the standard TS jack inputs when the **MIC/LINE INST** switch is set to **INST** (instrument input)⁵
- Balanced stereo line⁶ and headphone⁷ outputs
- MIDI IN and OUT connectors
- Direct monitoring function allows input monitoring with low latency
- USB port (USB-B type, USB 2.0 standard)
Use the included USB cable to connect the unit to a computer. To connect to an iOS device, use a Lightning to USB Camera Adapter made by Apple Inc.

CAUTION

When using a US-2x2 that is connected to a computer, it will operate using USB bus power.

Since the power supply is insufficient when using the unit connected by USB to an iOS device, however, please purchase a separate external power supply device for this use. (When using a US-4x4, always connect the included AC adapter.)

- Software mixer function convenient for live broadcasting and karaoke (for Windows)
- DAW software included

¹US-2x2: 2 inputs, US-4x4: 4 inputs

²XLR-3-31 equivalent

US-2x2: 2 inputs, US-4x4: 4 inputs

The US-2x2 has XLR/TRS combo jacks

³Standard 6.3mm (1/4") TRS stereo jack

(MIC/LINE INST switch set to MIC/LINE)

US-2x2: 2 inputs, US-4x4: 4 inputs

⁴Standard 6.3mm (1/4") TRS stereo jack

(**MIC/LINE INST** switch set to **INST**)

US-2x2/US-4x4: both 2 inputs

⁵Only **IN1-IN2** on the US-4x4

⁶Standard 6.3mm (1/4") TRS stereo jack

US-2x2: 2 outputs, US-4x4: 4 outputs

⁷Standard 6.3mm (1/4") stereo jack

US-2x2: 1 output, US-4x4: 2 outputs

■ Note about computer operation

If you are unsure about anything related to the basic operation of a computer when it is mentioned in an explanation in this manual, please refer to the computer operation manual.

To use this unit with a computer, dedicated software must be installed on the computer.

For details about software installation, see "Installing the dedicated software" on page 6.

Conventions used in this manual

The following conventions are used in this manual.

- Buttons, connectors and other physical parts of this unit are written using a bold font like this: **PHONES** knob.
- Information shown on the computer display is written like this "OK".
- Additional information is provided as necessary as tips, notes and cautions.

TIP

These are tips about how to use the unit.

NOTE

These provide additional explanations and describe special cases.

CAUTION

Failure to follow these instructions could result in injury, damage to equipment or lost recording data, for example.

Trademarks and copyrights

- TASCAM is a trademark of TEAC CORPORATION, registered in the U.S. and other countries.
- Microsoft, Windows, Windows Vista and Windows Media are either registered trademarks or trademarks of Microsoft Corporation in the United States and/or other countries.
- Apple, Mac, OS X and macOS are trademarks of Apple Inc.
- IOS is a trademark or registered trademark of Cisco in the U.S. and other countries and is used under license.
- ASIO is a trademark of Steinberg Media Technologies GmbH.



- Other company names, product names and logos in this document are the trademarks or registered trademarks of their respective owners.

Using the TEAC Global Site

You can download this Reference Manual and the Owner's Manual necessary for this unit from the TEAC Global Site

1. Open the TEAC Global Site
2. In the TASCAM Downloads section, click the desired language to open the Downloads website page for that language.

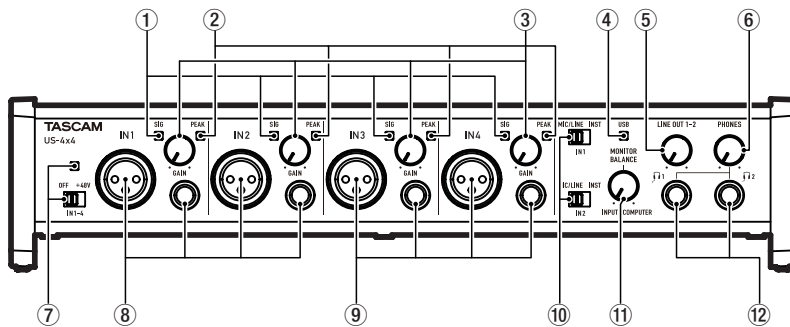
NOTE

If the desired language does not appear, click Other Languages.

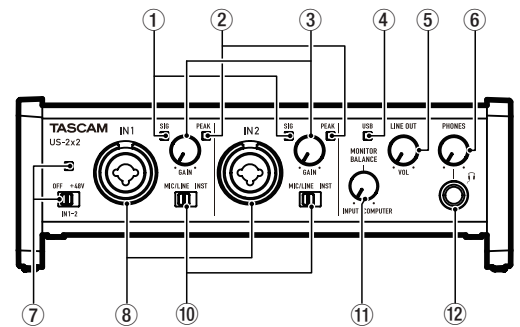
3. Click the product name in the "Search by Model Name" section to open the Downloads page for that product.
4. Select and download the Owner's Manual that are needed.

2 – Names and functions of parts

Front panel



US-4x4 front panel



US-2x2 front panel

① SIG indicators

The **SIG** indicators light green when signals (of at least -32 dBFS) are input through the **IN1/IN2** jacks (and US-4x4 **IN3/IN4** jacks).

② PEAK indicators

The **PEAK** indicators light red when signals that are about to distort (-1 dBFS or higher) are input through the **IN1/IN2** jacks (and US-4x4 **IN3/IN4** jacks).

③ GAIN knobs

Use to adjust the input levels of the **IN1/IN2** jacks (and US-4x4 **IN3/IN4** jacks).
Adjust these so that the **PEAK** indicators do not light red.

④ USB indicator

This lights when the USB connection is working.

⑤ LINE OUT knob

Use to adjust the output level of the **LINE OUT 1-2** jacks.

⑥ PHONES knob

Use to adjust the output level of the **PHONES** jack (1 and 2 jacks on US-4x4).

CAUTION

*Before connecting headphones, minimize the volume with the **PHONES** knob. Failure to do so might cause sudden loud noises, which could harm your hearing or result in other trouble.*

⑦ Phantom power switch/indicator

Use this switch to provide **+48V** phantom power to the **IN1/IN2** jacks (and US-4x4 **IN3/IN4** jacks).
The indicator lights when the phantom power switch is set to **+48V**.

CAUTION

- Set the **LINE OUT** and **PHONES** knobs to their minimum values before changing the phantom power setting. Depending on the connected mics, sudden loud noises from monitoring equipment could occur, and this could damage the equipment or harm hearing.
- The phantom power switch changes the setting for both US-2x2 input channels (all four US-4x4 input channels) simultaneously.
- Do not connect or disconnect mics when the phantom power switch is set to **+48V**. Doing so could cause a loud noise and might damage this unit and connected equipment.
- Set the phantom power switch to **+48V** only when using a condenser microphone that requires phantom power. Turning phantom power **+48V** when a dynamic mic or other

mic that does not require it is connected could damage this unit and connected equipment.

- When using condenser mics that require phantom power and dynamic mics together, be sure to use balanced dynamic mics. Unbalanced dynamic mics cannot be used when phantom power is enabled
- Supplying phantom power to some ribbon mics will break them. If you are unsure, do not supply phantom power to a ribbon mic.
- If you connect this unit to a laptop computer that is running on battery power and set the phantom power switch to **+48V**, the computer battery charge will be consumed more quickly.

⑧ IN1/IN2 (BALANCED/UNBALANCED) jacks

These input jacks are XLR/TRS combo jacks on the US-2x2 and separate XLR and standard TRS jacks on the US-4x4. Use the **MIC/LINE INST** switches on the front of the unit to enable balanced line (**MIC/LINE**) input or unbalanced (**INST**) input for the standard TRS jacks. When directly connecting a guitar, bass or other instrument, set the **MIC/LINE INST** switch to **INST**.

⑨ IN3/IN4 (BALANCED) jacks

These XLR analog mic input and standard line level TRS jacks are balanced input jacks.

NOTE

*On the US-4x4, the **IN1-IN4** (⑧, ⑨) inputs each have two jacks (XLR and TRS). Do not input signals through both jacks of the same input at the same time. If signals are input through both at the same time, neither signal will be received properly.*

⑩ MIC/LINE INST switches

Set according to the **IN1/IN2** jack input sources. Set to **MIC/LINE** when connecting electronic instruments, audio devices, mics and similar equipment. Set to **INST** when connecting an electric guitar, electric bass or other equipment with high output impedance.

⑪ MONITOR BALANCE knob

When recording input signals, use this to adjust the monitoring balance between the signals from this unit's input jacks and from the computer. The volume of signals input through this unit's input jacks increase the more the **MONITOR BALANCE** knob is set to the left (**INPUT**) and signals output from the computer increase the more this is set to the right (**COMPUTER**). This knob does not affect the recording level of input signals.

2 – Names and functions of parts

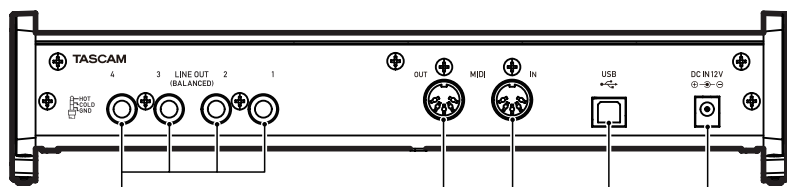
12 PHONES jack

Use this standard stereo phone jack to connect stereo headphones (1 and 2 jacks on US-4x4). Each of these jacks outputs the same signal as the **LINE OUT 1–2** jacks. Use an adapter to connect headphones with a mini plug.

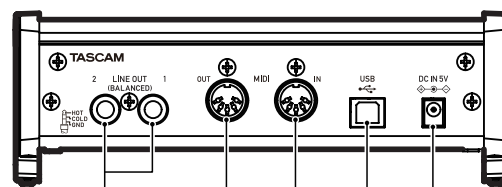
NOTE

The same signals are output from both the 1 and 2 jacks of the US-4x4.

Rear panel



US-4x4 rear panel



US-2x2 rear panel

13 LINE OUT (BALANCED) jacks

These standard TRS jacks are analog line outputs. The signals output from the **LINE OUT 1–2** jacks (1–4 jacks on US-4x4) can be set in the Settings Panel. For details, See “3 Line Outputs items” in the “Settings page” section on page 14 for details.

14 MIDI OUT connector

This 5-pin DIN is a standard MIDI output connector. This outputs MIDI signals.

15 MIDI IN connector

This 5-pin DIN is a standard MIDI input connector. Use this to input MIDI signals.

16 USB port

Use the included USB cable to connect the unit to a computer.
(Supports USB 2.0.)

17 DC IN 5V connector (US-2x2 only)

To use this unit when connected to an iOS device, connect an external power supply device here. See “Connecting the power” on page 10 for details.

NOTE

When using a US-2x2 that is connected to a computer, it will receive power from the computer's USB port, so a dedicated AC adapter (sold separately) should not be necessary.

Depending on the computer, however, the USB port might not be able to supply enough power to operate the unit.

In this case, use a dedicated AC adapter (sold separately).

18 DC IN 12V connector (US-4x4 only)

Connect the included DC12V AC adapter (PS-P1220E) here.

CAUTION

- *When using a US-2x2 that is connected to a computer, it will receive power from the computer's USB port. Depending on the computer, the USB port might not be able to supply enough power to operate the unit.*
- *When connected to a USB 3.0 port, it will function in High Speed mode equivalent to USB 2.0 (480 Mbps maximum).*
- *After waking a computer from suspend (sleep) mode, if the unit does not operate properly, turn it off and turn it on again or disconnect and reconnect the USB cable.*

3 – Installation

System requirements

For the latest information about supported operating systems, visit the TEAC Global Site

Windows

■ Supported operating systems

Windows 10 32-bit
Windows 10 64-bit
Windows 8.1 32-bit
Windows 8.1 64-bit
Windows 7 32-bit SP1 or later
Windows 7 64-bit SP1 or later
(Windows 8, Windows Vista and Windows XP are not supported)

■ Computer hardware requirements

Windows computer with a USB 2.0 port

■ CPU/processor speed

2 GHz or faster dual core processor (x86)

■ Memory

2 GB or more

CAUTION

Operation of this unit was confirmed using standard computers that meet the above requirements. This does not guarantee operation with all computers that meet the above requirements. Even computers that meet the same system requirements might have processing capabilities that differ according to their settings and other operating conditions

Mac OS X

■ Supported operating systems

macOS Sierra (10.12 or later)
OS X El Capitan (10.11 or later)
OS X Yosemite (10.10 or later)
OS X Mavericks (10.9.1 or later)
OS X Mountain Lion (10.8.4 or later)

■ Computer hardware requirements

Mac with a USB 2.0 port

■ CPU/processor speed

2 GHz or faster dual core processor

■ Memory

2 GB or more

Apple iOS devices

■ Supported operating systems

iOS 7 or later

Supported audio drivers

Windows: ASIO2.0, WDM, MIDI
Mac: Core Audio, Core MIDI

Installing the dedicated software

To use this unit with a computer, dedicated software must be installed on the computer.

The dedicated software might be updated at any time.

Download the latest software for the operating system you are using from the TEAC Global Site

- On a Windows computer, this will install the Windows driver and Settings Panel application.
- Installing the dedicated software on a Mac will install only the Mac Settings Panel application. The standard OS driver will be used.
- When using this unit with an iOS device, the standard OS driver will be used, so there is no need to install dedicated software.

CAUTION

Before starting to install software, quit other applications.

Installing the Windows dedicated software

NOTE

- *Complete installation of the Windows dedicated software on the computer before connecting the unit to it with the USB cable.*
- *If you connected the unit to the computer using the USB cable before installing the Windows dedicated software and the “Found New Hardware Wizard” launched, close the Wizard and disconnect the USB cable.*

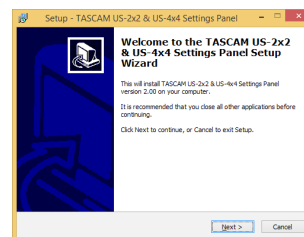
■ Windows dedicated software installation procedures

1. Download the latest Windows dedicated software for the operating system you are using from the TEAC Global Site and save it on the computer to be used with the unit.
2. Uncompress the saved software (zip file) on the computer desktop or another location.
3. Double-click the “TASCAM_US-2x2_US-4x4_Installer_x.xx.exe” file in the folder that appears after uncompression to automatically launch the installation software.

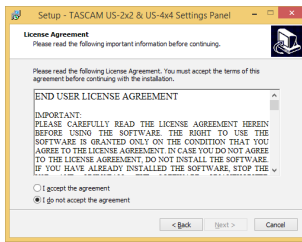
CAUTION

If you open a zip file without decompressing it and double-click the “TASCAM_US-2x2_US-4x4_Installer_x.xx.exe” file in the folder that opens, installation will not start. Right-click the zip file and select “Extract All”, for example, to decompress it and then try again.

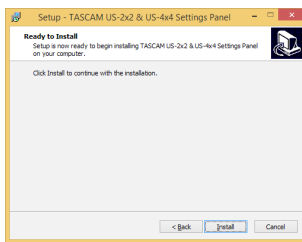
4. When a Security Warning or User Account Control screen appears, click the “Yes” button.
5. When the Setup Wizard screen appears, click the “Next” button.



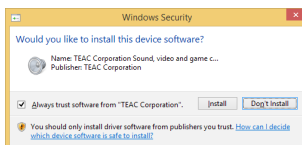
- Read the contents of the License Agreement, and select “I accept the agreement” if you agree to the terms. Then, click the “Next” button.



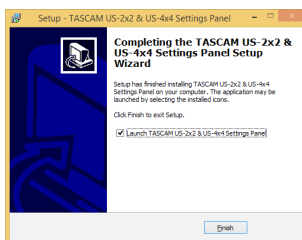
- Next, click the “Install” button.



- Next, click the “Install” button to start installation.



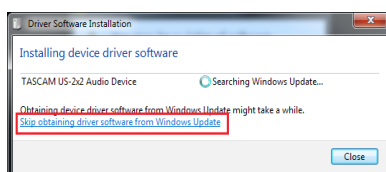
The following screen appears when installation has completed. Click the “Finish” button.



This quits the installer and launches the Windows Settings Panel.

NOTE

The first time you connect the unit by USB to the computer after installing the software, installation of the device driver will be executed. Some time might be necessary before the unit is recognized because Windows Update will be automatically searched at this time. If the unit is still not recognized after a while, open the software installation screen from the notification area at the bottom right of the computer display, and click “Skip obtaining driver software from Windows Update” to stop the search.



Installing the Mac dedicated software

NOTE

- Before starting to install the Mac dedicated software, quit other applications.
- While installing the Mac dedicated software, a warning message like this might appear: “US-2x2_US-4x4 Installer.dmg” can't be opened because it was not downloaded from the Mac App Store. If a message like this appears, follow the instructions in “Working with Gatekeeper” on page 8 and then proceed with the installation.

Mac dedicated software installation procedures

- Download the Mac dedicated software for the operating system you are using from the TEAC Global Site and save it on the computer to be used with the unit.
- Double-click “US-2x2_US-4x4 Installer.dmg”, which is the saved disk image file for the Mac dedicated software, and double-click “US-2x2_US-4x4 Installer.pkg” inside the folder that opens.

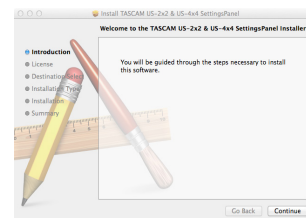


US-2x2_US-4x4
Installer.pkg

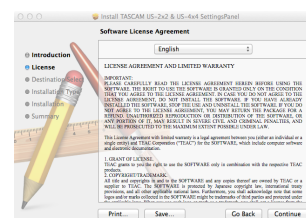
NOTE

Depending on the computer's settings, the downloaded zip file might not have opened automatically. In this case, open the zip file first and then double-click the disk image file.

- When the installer starts, click the “Continue” button.

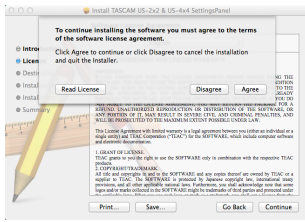


- Next, select the desired language and click the “Continue” button.

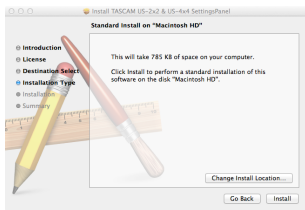


3 – Installation

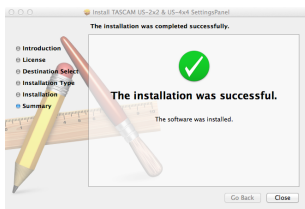
- Click the “Read License” button and check the contents of the Software License Agreement. If you agree to the contents of the license, click “Agree”. Then, click the “Next” button.



- Next, click the “Install” button to start installation.



- The following screen appears when installation has completed. Click the “Close” button.



Working with Gatekeeper

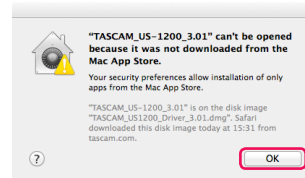
When using Mac OS X, depending on the Gatekeeper security function setting, a warning message might appear during installation.

The solution depends on the warning message shown.

See the following explanations for details.

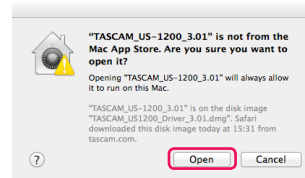
- When the Gatekeeper setting is “Allow applications downloaded from: the Mac App Store”

The following security warning might be shown: “US-2x2_US-4x4 Installer.dmg” can't be opened because it was not downloaded from the Mac App Store.”



In this case, click the OK button to close the message. Then, control-click (or right-click) the file and click “Open”.

Click the “Open” button if the following security warning message appears: “US-2x2_US-4x4 Installer.dmg” can't be opened because it was not downloaded from the Mac App Store. Are you sure you want to open it?”



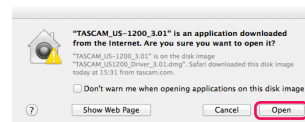
This warning message might also appear when the Gatekeeper setting is something other than “Allow applications downloaded from: the Mac App Store”.

The security warning message “US-2x2_US-4x4 Installer.dmg” can't be opened because it was not downloaded from the Mac App Store.” could appear again, and you might not be able to open the file.



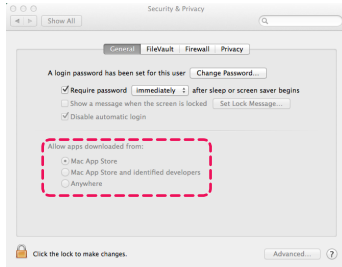
In this case, copy the file from the folder where it is to the desktop or another folder, and then open it. Alternatively, change the Gatekeeper settings to “Allow applications downloaded from: the Mac App Store and identified developers” and try opening it again.

- When the Gatekeeper setting is not “Allow applications downloaded from: the Mac App Store” “US-2x2_US-4x4 Installer.dmg” is an application downloaded from the Internet. Are you sure you want to open it?” might appear as a security warning message. In this case, click the “Open” button.



● Changing the Gatekeeper setting

The Gatekeeper setting can be changed using the “Allow applications downloaded from:” item on the “General” page of the “Security & Privacy” pane of the System Preferences. To change this, you must click the lock icon (🔒) at the bottom left and enter a password to unlock the settings.



This setting will lock again when you click the “Show All” button at the top left of the window to close the open pane or when you quit the System Preferences by, for example, clicking the round button at the top left corner of the window (⏏) or typing command-Q.

CAUTION

Changing the Gatekeeper settings could result in security risks.

If you changed the Gatekeeper setting to decrease security (use one of the lower settings), set it back to the original setting after updating the software and/or firmware. (When installing a firmware update immediately after software, do this after installing the firmware update.)

Uninstalling the dedicated software

NOTE

Normally, there is no need to uninstall the dedicated software. Follow these procedures if a problem occurs or you no longer intend to use the unit with the computer.

Uninstalling the Windows dedicated software

Uninstalling from the Programs and Features Control Panel

1. From the Start menu, open the Control Panel and launch Programs and Features.

NOTE

- *In Windows 10, right-click the Start button and click Control Panel when it appears.*
 - *In Windows 8.1, right-click the button at the bottom left of the Start screen and click Control Panel on the Apps screen.*
2. If “View by:” is set to “Category”, click “Uninstall a program” under the “Program” item. If “View by:” is set to “Large icons” or “Small icons”, click “Programs and Features”.
 3. Select and double-click “TASCAM US-2x2 & US-4x4 Driver” and “TASCAM US-2x2 & US-4x4 Software Mixer” in the list.
 4. Then, follow the instructions that appear on the screen.

Uninstalling the Mac dedicated software

Delete “US-2x2_US-4x4_Settings Panel” from the Applications folder to complete uninstallation.

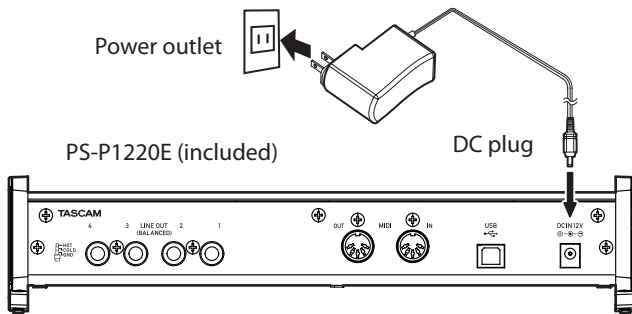
4 – Preparation

Connecting the power

■ US-4x4

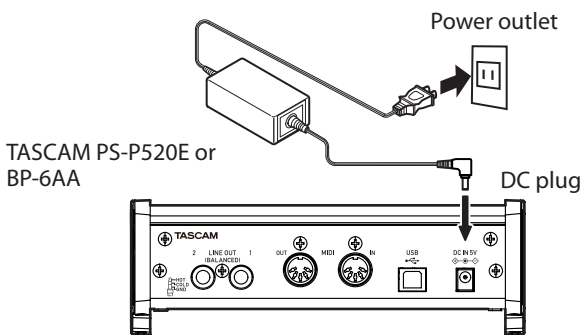
Connect the power to the US-4x4 as shown below.

- The AC adapter for the US-4x4 includes two types of outlet plugs. Attach the type of plug that matches the power outlet that you are using.



■ US-2x2

Normally, when a US-2x2 is connected to a computer, it will operate using USB bus power, so a separate power supply is not necessary. To power this unit when it is connected to an iOS device, however, you must connect a TASCAM PS-P520E AC adapter, TASCAM BP-6AA external battery pack or other power supply device to the DC IN 5V connector. In this case, connect the power source to the unit as shown below.

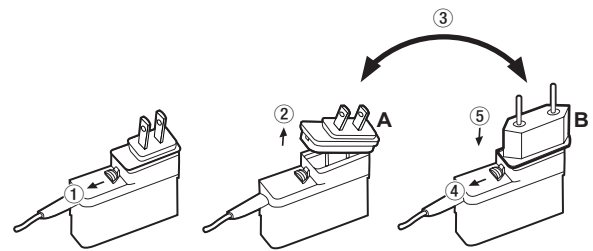


CAUTION

- Always use the included PS-P1220E AC adapter with the US-4x4.
- We highly recommend using a PS-P520E AC adapter or BP-6AA battery pack (both sold separately) with the US-2x2. When using another external power supply device, use one with the following specifications.
 - Power supply voltage: 5 V
 - Power supply current: 700 mA or more

Using a power supply device with specifications other than the above could cause malfunction, overheating, fire or other problems. If trouble should occur, stop using the unit and contact the retailer where you purchased it or a TEAC service center to request repair.

Changing the outlet plug (US-4x4 only)



- ① Move the latch on the AC adapter in the direction of the arrow.
- ② Pull off the outlet plug.
- ③ Replace it with the other outlet plug (A or B).
- ④ Move the latch on the AC adapter in the direction of the arrow again.
- ⑤ Attach the outlet plug to the AC adapter.

This completes changing the outlet plug.

After changing the outlet plug, confirm that it is not loose or crooked and that everything is normal before plugging it into an outlet.

CAUTION

Do not use the adapter if there is anything abnormal about the plug after changing it. Use when the plug is abnormal could cause fire or electric shock. Contact the retailer where you purchased the unit or a TEAC service center (on the back cover) to request repair.

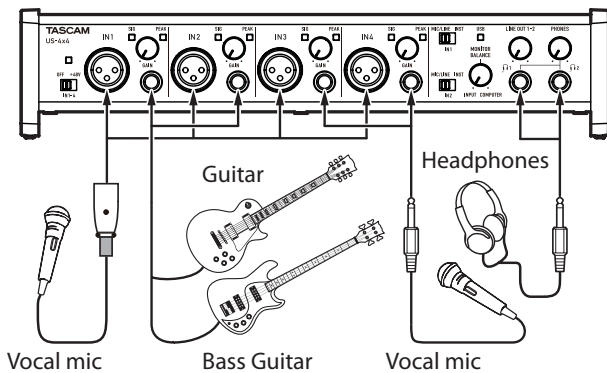
5 – Connections

Connecting other equipment

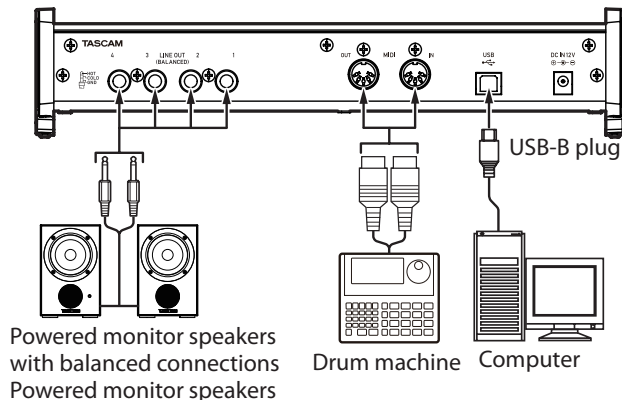
This is an example of US-4x4 connections.

■ Precautions before making connections

- Carefully read the operation manuals of the devices to be connected and then connect them correctly.
- Before making connections, turn this unit and all equipment to be connected off (standby).
- If possible, install all connected devices so that they are powered from the same AC power supply line. When using a power strip or similar device, be sure to use one that has high current capacity in order to minimize voltage fluctuations in the AC power supply.



Examples of connections to a US-4x4 (front)



Examples of connections to a US-4x4 (back)

Computer connections

Use the included USB cable to connect the unit to a computer USB 3.0/2.0 port. When the USB connection is working, the USB indicator on the front of the unit lights.

CAUTION

If you connect this unit to a computer via a USB hub, for example, audio signal dropouts, clicking noises and other interference could occur due to the influence of other USB devices connected to that hub. For this reason, we strongly recommend connecting this unit to a separate USB port. Connecting USB keyboards and mice, however, to the same bus should not be a problem.

Audio connections

Analog audio signals input into this device from mics, guitars, keyboards and other audio equipment can be converted into digital signals and transmitted to the computer via USB. In addition, by connecting speakers (through an amplifier if not powered) or headphones to this unit, you can monitor audio signals that are input to this unit and output from the computer.

CAUTION

*Before connecting audio equipment, set the **GAIN**, **LINE OUT** and **PHONES** knobs to their lowest values. Failure to do so could cause sudden loud noises from monitoring equipment, and this could damage the equipment or harm hearing.*

Microphones

- **Dynamic mics**
Connect these to the **IN1/IN2** jacks (and US-4x4 **IN3/IN4** jacks) on the front of the unit
- **Condenser mics**
When using condenser mics that require phantom power, connect them to the **IN1/IN2** jacks (and US-4x4 **IN3/IN4** jacks) on the front of the unit, and set the phantom power switch to **+48V**.

When the phantom power switch is set to **+48V**, the phantom power indicator on the front of the unit lights.

CAUTION

- *Before making connections, turn this unit and all equipment to be connected off (standby).*
- *The phantom power switch changes the setting for both US-2x2 input channels (all four US-4x4 input channels) simultaneously. Do not turn phantom power +48V when connecting a mic that does not require phantom power.*
- *Do not connect or disconnect mics while phantom power is +48V. Doing so could cause a loud noise and might damage this unit and connected equipment.*
- *Set the **LINE OUT** and **PHONES** knobs to their minimum values before turning phantom power +48V/OFF. Depending on the connected mics, sudden loud noises from monitoring equipment could occur, and this could damage the equipment or harm hearing.*
- *Set the phantom power switch to +48V only when using a condenser microphone that requires phantom power. Turning phantom power +48V when a dynamic mic or other mic that does not require it is connected could damage this unit and connected equipment.*
- *When using condenser mics that require phantom power and dynamic mics together, be sure to use balanced dynamic mics. Unbalanced dynamic mics cannot be used when phantom power is enabled.*
- *Supplying phantom power to some ribbon mics will break them. If you are unsure, do not supply phantom power to a ribbon mic.*

Guitar

When connecting a guitar or bass guitar directly to this unit, use the **IN1** or **IN2** jack on the front of the unit and set the **MIC/LINE INST** switch for that jack to **INST**.

5 – Connections

Electronic instruments and other audio equipment

When connecting an electronic instrument or other audio equipment directly to this unit, use the **IN1** and **IN2** jacks on the front of the unit and set their **MIC/LINE INST** switches to **MIC/LINE**.

Analog record players

The output of an analog record player cannot be connected directly to this unit. To connect an analog record player to this unit, a phono amp and equalizer (or an audio amplifier that has phono input jacks) must be connected between them.

Monitor speakers

Connect monitor speakers (powered speakers or an amplifier and speaker system) to the **LINE OUT 1-2** jacks on the back of the unit.

Use the **LINE OUT** knob on the front of the unit to adjust the speaker volume.

Headphones

Connect headphones to the **PHONES** jack (standard stereo) on the front of the unit.

NOTE

*The same signals are output from both the **IN1** and **IN2** jacks of the US-4x4.*

CAUTION

*Before connecting headphones, minimize the volume with the **PHONES** knob. Failure to do so might cause sudden loud noises, which could harm your hearing or result in other trouble.*

MIDI connections

Connect sound modules, keyboards, synthesizers, drum machines and other MIDI devices to the unit in the following manner.

- If you want to monitor sound from a MIDI device, connect its outputs to this unit's **LINE IN** or use in external mixer.
- You can also use the **MIDI IN** and **MIDI OUT** connectors on the back of the unit to send and receive MIDI timecode (MTC). By doing this, you can use an application that supports MTC to synchronize a multitrack recorder (MTR) and MIDI devices.

CAUTION

- *The **USB** indicator might stay lit even after the connected computer is shut down. This is because some computers continue to provide power through USB cables even after being shut down.*
- *When using Windows Media Player, if the "Sound and Audio Devices Properties" **Control Panel** "MIDI music playback (default device)" is set to "Microsoft GS Wavetable SW Synth", you will not be able to hear MIDI performances through this unit's **LINE OUT [BALANCED]** or **PHONES** jacks.*

Connecting with iOS devices

■ US-2x2

You will need a Lightning to USB Camera Adapter¹ and an external power supply device.²

■ US-4x4

You will need a Lightning to USB Camera Adapter.¹

¹You will need to prepare an Apple genuine Lightning to USB Camera Adapter (sold separately).

²Use a power supply device as described in "Connecting the power" on page 10.

6 – Using the Settings Panel

Opening the Settings Panel

You can use the Settings Panel to make settings for the various functions of the unit.

Open the Settings Panel in the following manner.

Windows

Windows 10

Click the Windows Start button and select All Programs → TASCAM → US-2x2 & US-4x4 Settings Panel.

Windows 8.1

Right-click the Windows Start button and select Control Panel.

NOTE

You can also left-click the Start button to open the Start screen. Click the  button to open the Apps screen, and select US-2x2 & US-4x4 Settings Panel under TASCAM.

Windows 7

Click the Windows Start button and select All Programs → TASCAM → US-2x2 & US-4x4 Settings Panel.

Mac

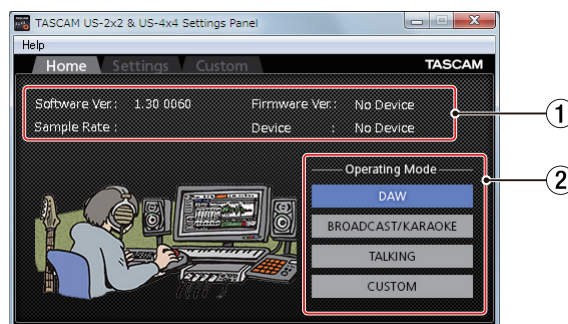
- Using the Finder, open the Applications folder and click "TASCAM US-2x2 & US-4x4 Settings Panel" to open the Settings Panel.
- In the Audio Devices window of the Audio MIDI Setup application, right-click (control-click) "US-2x2" or "US-4x4" (or click the settings icon when the unit name is selected) and click "Configure device..." to open the Settings Panel.

Windows Settings Panel overview

The Windows Settings Panel has three pages. Click a tab at the top of the Settings Panel to open that page.

- Home :** This page shows a variety of information and allows the selection of presets suitable for specific operations.
- Settings :** Make detailed settings for the US-2x2 or US-4x4 on this page.
- Custom :** Make software mixer settings.

HOME page



Windows Settings Panel screen

① Status display area

This shows the current status of the software.

Item displayed	Meaning
Software Ver.	This is the software version.
Sample Rate	This shows the sampling frequency. The sampling frequency can only be set in the Windows version. Use the displayed value pull-down menu to select the frequency (44.1, 48, 88.2 or 96 kHz).
Firmware Ver.	This is the firmware version used by the connected unit.
Device	This is the name of the connected unit. ("No Device" is shown when no device is connected.)

② Operating Mode item

This sets the operation mode of the unit.

Options

"DAW"

Use this setting when using DAW software, as well as when you do not need "BROADCAST/KARAOKE" mode (for live broadcasting or karaoke applications).

"BROADCAST/KARAOKE"

Use this setting for live broadcasting, karaoke and similar applications.

This preset enables the loopback function. It mixes the sound output from the computer with the sounds of mics input through the **IN 1** and **IN 2** jacks on the unit and sends the mix back to the computer.

"TALKING"

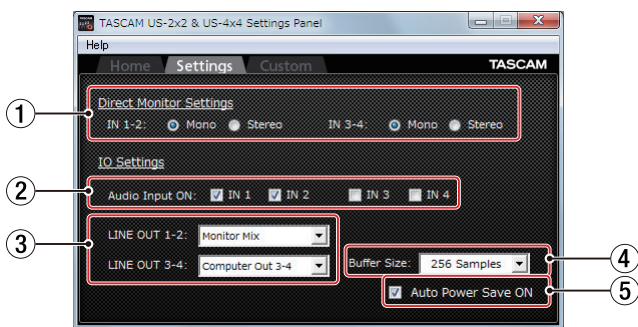
Use this setting for voice calling and similar applications. This preset disables the loopback function. The sound output from the computer (including received voices and music playing on the computer) is not sent back to the computer.

"CUSTOM"

Use the settings made on the Custom page.

6 – Using the Settings Panel

Settings page



① Direct Monitor Settings

IN 1-2 and IN 3-4 (US-4x4 only)

Set the monitoring signal for the **IN1-IN2/IN3-IN4** jacks to “Mono” or “Stereo”.

- When set to “Mono”
Stereo signals sent to the computer remain unchanged, but are output as mono signals from the **LINE OUT (BALANCED)** and **PHONES (11 and 12 jacks on US-4x4)** jacks.
- When set to “Stereo”
Stereo signals sent to the computer remain unchanged, and are output as stereo signals from the **LINE OUT (BALANCED)** and **PHONES (11 and 12 jacks on US-4x4)** jacks.

② Audio Input items

Turn input on/off for each channel separately.

- Turn an input on by putting a check in its checkbox . When an input is on, signals on that channel will be input.
- Turn an input off by removing the check from its checkbox . When an input is off, signals on that channel will not be input.

③ Line Outputs items

LINE OUT 1-2

- Select the signals output from the unit’s **LINE OUT 1-2** and **PHONES (11 and 12 jacks on US-4x4)** jacks.

LINE OUT 3-4 (US-4x4 only)

- Select the signals output from the unit’s **LINE OUT 3-4** jacks.

Options

“Monitor Mix”

The signals from the channels selected using the **Audio Input On/Off** items and the signals sent from the computer by USB are mixed using the **MONITOR BALANCE** knob. This mix is output from the **LINE OUT 1-2** and **PHONES** jacks.

“Computer Out 1-2”

Only the “Computer Out 1-2” signals sent from the computer by USB are output from the **LINE OUT [BALANCED]** and **PHONES** jacks.

“Computer Out 3-4 (US-4x4 only)”

Only the “Computer Out 3-4” signals sent from the computer by USB are output from the **LINE OUT [BALANCED]** and **PHONES** jacks.

NOTE

*Set the **MONITOR BALANCE** knob all the way to the left (**INPUT**) to monitor only the input channel signals and set it all the way to the right (**COMPUTER**) to monitor only signals output from the computer. At other positions, both signals will be mixed.*

④ Buffer Size item

The driver for the unit stores the audio input and output signals transferred to and from the computer temporarily in a buffer.

This buffer size can be adjusted.

Smaller buffer sizes result in less audio signal delay (latency), but require high-speed processing by the computer.

If the processing cannot keep up, for example, due to other system operations, clicking and popping noises might occur and the audio signal might even drop out.

Increasing the buffer size will stabilize operation and suppress negative effects on audio signals, but the delay in audio signals sent to the computer will increase.

You can use the slider on the panel to adjust the buffer size, according to the use conditions.

You can adjust the buffer size used with this unit according to your use conditions.

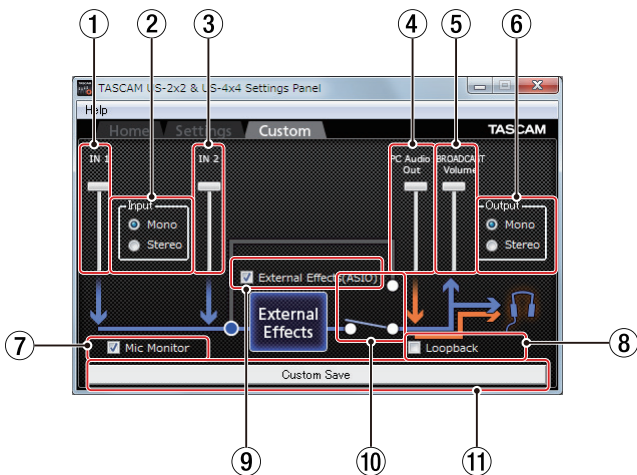
⑤ Auto Power Save ON

When this setting is on, if operating in standalone mode and no input signal (above -60 dBFS) has been detected for 30 minutes, the unit will turn itself off (start standby) automatically.

- Putting a check (✓) in the checkbox will turn the automatic power saving function on so the unit will automatically turn off (enter standby mode).
- Removing the check (✓) in the checkbox will turn the automatic power saving function off.

6 – Using the Settings Panel

Custom page



① IN 1 volume slider

Use to adjust the volume input through the unit's **IN1** jack.

② Input selection

Use to set whether the input signal is handled as "Mono" or "Stereo".

Options

"Mono"

When using one mic (connected to the **IN1** jack), it will be treated as input from both "IN 1" and "IN 2". The audio from "IN 1" will be heard from both left and right headphone channels. In most circumstances, select this when using a mic for a live broadcast, for example.

"Stereo"

Even when using one mic (connected to the **IN1** jack), it will not be treated as being input from both "IN 1" and "IN 2". It will be treated as only being input from "IN 1". The audio from "IN 1" will be heard from the left headphone channel, and audio from "IN 2" will be heard from the right headphone channel. Use this if a keyboard or other stereo audio sources is being input for live broadcasting or karaoke.

NOTE

When "DAW" mode is selected, if set to "MONO", this will automatically be switched to "STEREO (DAW)".

③ IN 2 volume slider

Use to adjust the volume input through the unit's **IN2** jack.

④ PC Audio Out volume slider

Use to adjust the playback volume of Windows Media Player and karaoke apps.

⑤ BROADCAST Volume slider

Use to adjust the playback volume of Sound Recorder and karaoke apps. Use this also to adjust the broadcast volume with live broadcast apps.

NOTE

- Turn the **MONITOR BALANCE** knob on the unit all the way to the right (**COMPUTER**) to check levels while adjusting the volume sliders.
- Double-click a volume slider to reset it to its default value.

⑥ Output selection

Set whether the output signal is handled as mono or stereo.

Options

"Mono"

Only the audio from the left side can be handled when using some applications. When using an application like this, audio from the right side cannot be transmitted or recorded.

Set to **Mono** to mix both left and right signals to mono and transmit that sound to the computer.

"Stereo"

Set when the application being used supports stereo.

When set to **Stereo**, a stereo sound can be transmitted to the computer.

NOTE

When set to **Mono**, all stereo input signals will be converted to mono. This setting receives priority even if the Input selection (②) is set to **STEREO** for mic input.

⑦ Mic Monitor selection

If the **Mic Monitor** checkbox has a check (✓), sounds from mics and other input will be mixed with the **PC Audio Out** signal and looped back to the computer. If the check (✓) is removed from the **Mic Monitor** checkbox, sounds from mics and other sources input through **IN 1** and **IN 2** will not be sent to the headphone output.

⑧ Loopback selection

If the **Loopback** checkbox has a check (✓), the sound from the computer will be broadcast and output from the **PHONES** jack.

If the check (✓) is removed from the **Loopback** checkbox, the sound from the computer will only be output from the **PHONES** jack.

⑨ External Effects (ASIO)

To use an echo on mics and other signals input to the unit by using an external effect, check the "External Effects (ASIO)" checkbox (✓).

CAUTION

Depending on the broadcast software settings, the signal could loop and cause feedback.

NOTE

Even if you have removed the check from the "External Effects (ASIO)" checkbox (✓), the check (✓) will automatically be added when you select **DAW** mode.

⑩ External Effects switch

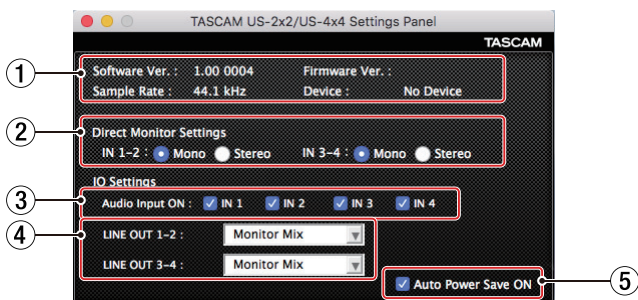
When a check (✓) is in the "External Effects (ASIO)" checkbox, this switch will be set to the "External Effects" side and light.

⑪ Custom Save

Click to save the **Custom** page settings. You can use these settings when the **Operating Mode** item is set to **Custom** on the **Home** page.

6 – Using the Settings Panel

Mac Settings Panel overview



① Status display area

This shows the current status of the software.

Item displayed	Meaning
Software Ver.	This is the software version.
Sample Rate	This shows the sampling frequency. The sampling frequency can only be set in the Windows version. Use the displayed value pull-down menu to select the frequency (44.1, 48, 88.2 or 96 kHz).
Firmware Ver.	This is the firmware version used by the connected unit.
Device	This is the name of the connected unit. ("No Device" is shown when no device is connected.)

② Direct Monitor Settings

IN 1-2 and IN 3-4 (US-4x4 only)

Set the monitoring signal for the **IN1-IN2/IN3-IN4** jacks to "Mono" or "Stereo".

- When set to "Mono"
Stereo signals sent to the computer remain unchanged, but are output as mono signals from the **LINE OUT (BALANCED)** and **PHONES** (1 and 2 jacks on US-4x4) jacks.
- When set to "Stereo"
Stereo signals sent to the computer remain unchanged, and are output as stereo signals from the **LINE OUT (BALANCED)** and **PHONES** (1 and 2 jacks on US-4x4) jacks.

③ Audio Input items

Turn input on/off for each channel separately.

- Turn an input on by putting a check in its checkbox . When an input is on, signals on that channel will be input.
- Turn an input off by removing the check from its checkbox . When an input is off, signals on that channel will not be input.

④ Line Outputs items

LINE OUT 1-2

- Select the signals output from the unit's **LINE OUT 1-2** and **PHONES** (1 and 2 jacks on US-4x4) jacks.

LINE OUT 3-4 (US-4x4 only)

- Select the signals output from the unit's **LINE OUT 3-4** jacks.

Options

"Monitor Mix"

The signals from the channels selected using the **Audio Input On/Off** items and the signals sent from the computer by USB are mixed using the **MONITOR BALANCE** knob. This mix is output from the **LINE OUT 1-2** and **PHONES** jacks.

"Computer Out 1-2"

Only the "Computer Out 1-2" signals sent from the computer by USB are output from the **LINE OUT [BALANCED]** and **PHONES** jacks.

"Computer Out 3-4 (US-4x4 only)"

Only the "Computer Out 3-4" signals sent from the computer by USB are output from the **LINE OUT [BALANCED]** and **PHONES** jacks.

NOTE

*Set the **MONITOR BALANCE** knob all the way to the left (**INPUT**) to monitor only the input channel signals and set it all the way to the right (**COMPUTER**) to monitor only signals output from the computer. At other positions, both signals will be mixed.*

⑤ Auto Power Save ON

When this setting is on, if operating in standalone mode and no input signal (above -60 dBFS) has been detected for 30 minutes, the unit will turn itself off (start standby) automatically.

- Putting a check (✓) in the checkbox will turn the automatic power saving function on so the unit will automatically turn off (enter standby mode).
- Removing the check (✓) in the checkbox will turn the automatic power saving function off.

Notification function

If the computer you are using is connected to the Internet, notifications might appear when the Settings Panel is launched.

NOTE

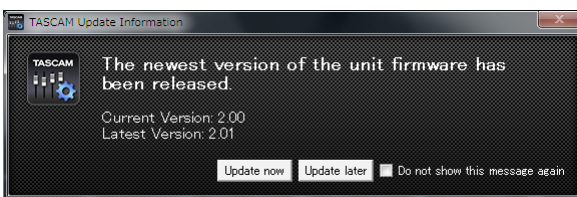
Put a check in the “Do not show the same message again” checkbox to prevent the same message from being shown the next time it is launched.

Automatic Settings Panel and firmware update function

If the computer you are using is connected to the Internet, when a new version of the Settings Panel or the firmware is released, a notification about automatic updating will appear when the Settings Panel is launched.



Settings Panel update notification



Firmware update notification

Click the “Update now” button if you want to use the latest version of the Settings Panel or firmware.

The file will be downloaded automatically in the update software will launch.

Click the “Update later” button to close the update window if you do not want to update or want to update later.

NOTE

- *Put a check (✓) in the “Do not show the same message again” checkbox to prevent the same window from being shown the next time it is launched.*
- *After closing the update window, you can reopen it by selecting Help → Update from the menu.*

7 – Application Guide

In this chapter, we explain how to set some audio applications for use with this unit.

DAW software

Bundled DAW software

Download quickstart guides for the bundled DAW software from the TEAC Global Site and refer to them for instructions about downloading, installing and making settings in these applications.

Other DAW software

When using any other DAW software, consult its operation manual.

Driver settings for specific purposes (Windows only)

Purpose	ASIO driver set with DAW software or other application	Sound default device
Using a DAW or other application primarily for recording (This ignores the Home page Operating Mode setting.)	US-2x2 & US-4x4*	US-2x2 or US-4x4*
Using a DAW or other application primarily for playback (Set the Home page Operating Mode to DAW.)	US-2x2 & US-4x4	US-2x2 & US-4x4
Using a voice communication app, for example (Set the Home page Operating Mode to TALK.)	Mixing Driver	Mixing Driver

* This might improve performance depending on the operating conditions.

Windows Media Player

1. Open the OS Control Panel.

NOTE

Follow these procedures to open the Control Panel.

Windows 10/Windows 8.1

Right-click the Windows Start button and select Control Panel.

Windows 7

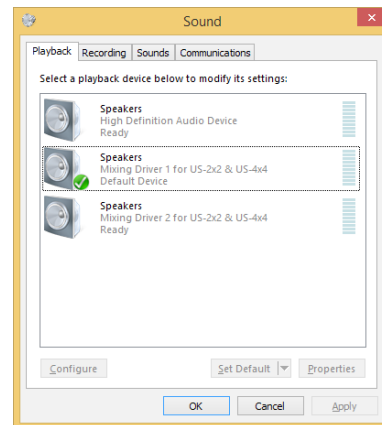
Left-click the Windows Start button and select Control Panel from the Start menu.

2. Double-click Sound in the Control Panel to open it.

NOTE

If the Control Panel display method is set to Icon, a Sound icon will be shown.

3. On the "Playback" page, right-click "US-2x2 (or US-4x4)" or "Mixing Driver 1 for US-2x2 & US-4x4", and click "Set as Default Device" in the pop-up menu that appears. When you do this, the green check mark ("✓") appears next to the selected device.



Windows 8.1 screen

NOTE

To use the unit as a recording device, set the default device according to the ASIO device being used on the Recording tab in the same manner as on the Playback tab.

4. After completing the setting, click the "OK" button.
5. Launch Windows Media Player, select an audio file and start playback.

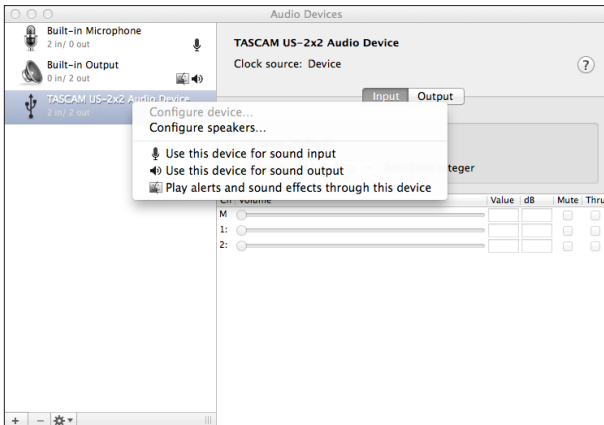
NOTE

- If you change the setting while Windows Media Player is running, the software will not recognize that the device has been changed. In this case, restart Windows Media Player.
- If you still cannot hear sound after making the settings and completing the procedures above, restart the computer.
- If you make this setting, sound will be output through this unit, but no sound will be output from the computer's speakers or headphone jack.

Mac OS X and iTunes

1. Open the Utilities folder within the “Applications folder”, and double-click “Audio MIDI Setup”. Then open the “Audio Devices” window.
2. Click “TASCAM US-2x2 Audio Device” (or “TASCAM US-4x4 Audio Device”) to select it and right-click or control-click it. Then, click “Use this device for sound output” in the pop-up menu.

The speaker mark appears next to “TASCAM US-2x2 Audio Device” (or “TASCAM US-4x4 Audio Device”).



NOTE

To use this device as the recording device, select “Use this device for sound input” for the “TASCAM US-2x2 Audio Device” (or “TASCAM US-4x4 Audio Device”).

3. Launch iTunes, select an audio file and start playback.

8 – Standalone Mode

Overview

This unit will operate in standalone mode if it is turned on when it is not connected to a computer by USB.

You can use this unit as a mic preamp and to monitor input signals.

This function is convenient when you want to practice an instrument without recording, for example.

An external power supply device is necessary. See “Connecting the power” on page 10 for details.

Settings in standalone mode

When operating in standalone mode, input signals pass-through the built-in digital mixer and output selector, which are set at fixed values, and are output from the output jacks. In addition, when operating in standalone mode, the USB indicator will blink.

Settings Panel settings

The Settings Panel will be set as follows.

- Direct Monitor Settings Input 1-2 : Mono
- Direct Monitor Settings Input 3-4 : Mono
(US-4x4 only)
- Audio Input On/Off : All on
- Line Outputs 1-2 : MONITOR
- Line Outputs 3-4 : MONITOR
(US-4x4 only)
- ERP2 Setting On/Off : Current setting retained

9 – MIDI Implementation Chart

■ MIDI Implementation Chart

Function		Transmit	Recognize	Remarks
Basic channels	When power on	×	×	Thru
	Settable	×	×	
Mode	When power on	×	×	Thru
	Messages	×	×	
	Altered		
Note number	Range	×	×	Thru
Velocity	Note on	×	×	Thru
	Note off	×	×	
Aftertouch	Polyphonic	×	×	Thru
	Channel	×	×	
Pitch bend		×	×	Thru
Control change		×	×	Thru
Program change		×	×	Thru
	Setting range		
System exclusive		×	×	Thru
System common	Position	×	×	Thru
	Song select	×	×	
	Tune	×	×	
System real-time	Clock	×	×	Thru
	Command	×	×	
Other	Local on/off	×	×	Thru
	All notes off	×	×	
	Active sense	×	×	
	Reset	×	×	
Notes				

Mode 1: OMNI ON, POLY Mode 2: OMNI ON, MONO ○ : YES
 Mode 3: OMNI OFF, POLY Mode 4: OMNI OFF, MONO × : NO

10 – Troubleshooting

Please read this chapter if you are unable to use the unit properly even after setting it following the procedures in this manual.

If you are still unable to resolve a problem, please contact TASCAM customer support with the following information about the operating environment and details about the trouble.

■ Operating environment

- Computer manufacturer :
- Model :
- CPU :
- Memory (RAM) :
- Operating system :
- Applications used :
- Antivirus software :
- Wireless LAN use:

See the end of this document for contact information.

■ I cannot install the dedicated software.

1. Check the operating system
The operating system being used might not be compatible with the software that you are trying to install. Check the compatible operating system of the software you are trying to install again.
2. Stop software running in the background
Antivirus software and other software that runs in the background can prevent installation. Quit software that runs in the background and try installation again.

■ The unit is connected, but the computer does not recognize it.

1. Install the dedicated software
See "Installing the dedicated software" on page 6.
2. Change the USB port
 - This unit cannot be used with USB 1.1. Use a USB 2.0 or USB 3.0 port.
 - Do not use a USB hub with this unit. Always connect the unit directly to a USB port on the computer.
 - If the above methods do not resolve the problem, connect the unit to a different USB port on the computer.

■ I cannot hear any sound even when audio is played back on the computer.

Confirm that the **MONITOR BALANCE** knob on the unit is not turned all the way to the left (toward **INPUT**). If that is the case, turn the **MONITOR BALANCE** knob to the right of center.

In addition, check the status of the unit's connection with the computer.

Moreover, if you make the following settings, sound will be output through this unit, but no sound will be output by the computer's speakers or headphone jack.

Windows

- See the "Windows Media Player" section of "7 – Application Guide" on page 18 of this manual, and set the default playback device as necessary for the OS.
- Set the same sampling rates for the Software Mixer Sample Rate setting, the ASIO sampling rate and the default devices (playback/recording).

Mac

1. Quit all applications and open "System Preferences..." from the Apple menu.
2. Open "Sound".
3. On the "Output" tab, select "US-2x2" or "US-4x4".

After completing the setting, restart the computer and check the sound of playback. Depending on the application that you are using, you might need to make additional device settings. In particular, DAW software operate using audio engines with settings that are different from the OS settings, so confirm the DAW driver settings first after installing the dedicated software for this unit.

Please see the manuals for the applications that you are using for detailed setting procedures.

■ Sound breaks up or there is noise.

The processing load on the computer causes sound to break up and noise to occur.

Here are some methods to reduce the load on the computer.

1. A wireless LAN and software running in the background, including antivirus software, regularly put processing loads on the computer, which can cause sound to break up and other noise.
Stop wireless LAN transmission, antivirus software and other software running in the background when using this unit.
2. Set the buffer size (latency) in the audio application that you are using or in this unit's Settings Panel to a larger value. (Windows only)

NOTE

Consult the maker of the audio application that you are using for methods to reduce its load on your computer.

3. Change the settings of your computer so that they are optimal for audio processing.

Using Windows

- ① Open the Control Panel using the procedures for the OS (Windows 10/Windows 8.1/Windows 7).
 - In Windows 10, click Control Panel from the Windows Start button to open the Control Panel. Then, click the System icon.
 - In Windows 8.1, right-click the ordinary Start screen (Metro user interface screen) and then click "All apps". Then, right-click "Computer" and select "Properties".
 - In Windows 7, right-click "Computer" from the Windows Start button, and select "Properties".
- ② Click "Advanced system settings".
- ③ Click "Settings" in the "Performance" section of the "Advanced" tab of the "System Properties" window.
- ④ In the "Visual Effects" tab of the "Performance Options" window, select "Adjust for best performance".

Using Mac

- ① Open "System Preferences..." from the Apple menu, and select "Energy Saver".
- ② Set "Computer sleep" to "Never".
- ③ Set "Display sleep" to "Never".

NOTE

Depending on the Mac OS X version and Macintosh computer model, this setting might not be available.

4. Try a different USB port
Since the unit might not properly function with some USB ports, try connecting to a different USB port built-in to the computer.

NOTE

- *Try again after disconnecting other USB devices. (Keyboards and mice can be left connected.)*
- *Do not use a USB hub. Always connect the unit directly to a USB port on the computer (built-in)*

■ Support for Bundled DAW Software

TASCAM does not provide end-user support for the bundled DAW Software. Please check the Help menu of the installed software to find where this support is available.

11 – Specifications

Audio resolution

■ Sampling frequencies

44.1, 48, 88.2, 96 kHz

■ Quantization bit depth

16/24-bit

Input/output ratings

Analog inputs

Mic inputs (balanced)

US-2x2:	IN 1-2
US-4x4:	IN 1-4
Connectors:	XLR-3-31 equivalent (1: GND, 2: HOT, 3: COLD)
Input impedance:	2.2 k Ω
Rated input level:	-65 dBu (0.0004 Vrms) (gain knob at MAX)
Rated input level:	-8 dBu (0.3090 Vrms) (gain knob at MIN)
Maximum input level:	+8 dBu (1.9467 Vrms)
Gain range:	57 dB

Instrument inputs (unbalanced)

IN 1-2	
(MIC/LINE INST switch set to INST)	
Connectors:	6.3mm (1/4") standard TS stereo jacks (Tip: HOT, Sleeve: GND)
Input impedance:	1 M Ω or more
Rated input level:	-63 dBV (0.0007 Vrms) (gain knob at MAX)
Rated input level:	-6 dBV (0.5015 Vrms) (gain knob at MIN)
Maximum input level:	+10 dBV (3.162 Vrms)
Gain range:	57 dB

Line inputs (balanced)

US-2x2:	IN 1-2
US-4x4:	IN 1-4
(MIC/LINE INST switch set to MIC/LINE)	
Connector:	6.3mm (1/4") standard TRS stereo jack (Tip: HOT, Ring: COLD, Sleeve: GND)
Input impedance:	10 k Ω
Rated input level:	-53 dBu (0.0017 Vrms) (gain knob at MAX)
Rated input level:	+4 dBu (1.228 Vrms) (gain knob at MIN)
Maximum input level:	+20 dBu (7.75 Vrms)
Gain range:	57 dB

Analog outputs

Line Outputs (balanced)

US-2x2:	LINE OUT 1-2
US-4x4:	LINE OUT 1-4
Connectors:	6.3mm (1/4") standard TRS stereo jacks (Tip: HOT, Ring: COLD, Sleeve: GND)
Output impedance:	110 Ω
Rated output level:	+4 dBu (1.273 Vrms)
Maximum output level:	+20 dBu (7.75 Vrms)

Headphone output (PHONES)

Connector:	6.3mm (1/4") standard stereo jack
Maximum output	
US-2x2:	18 mW + 18 mW or higher (THD+N 1% or less, into 32 Ω load)
US-4x4:	45 mW + 45 mW or higher (THD+N 1% or less, into 32 Ω load) (\square 1 and \square 2 total)

Control input/output ratings

MIDI IN connector

Connector:	5-pin DIN
Format:	standard MIDI

MIDI OUT connector

Connector:	5-pin DIN
Format:	standard MIDI

USB

Connector:	4-pin USB B-type
Transfer rate:	USB 2.0 High Speed (480 Mbps)

Audio performance

Mic amp EIN (equivalent input noise)

-127 dBu or less (150 Ω termination, gain knob at MAX)

Frequency response

IN1-IN4 → LINE OUT (BALANCED), Headphone (PHONES) output

At 44.1 kHz and 48 kHz	
20Hz :	+0dB/-0.3dB (JEITA)
20kHz:	+0dB/-0.1dB (JEITA)
20kHz:	+0dB/-0.5dB (HP output, JEITA)
At 88.2 kHz and 96 kHz	
20Hz :	+0dB/-0.3dB (JEITA)
40kHz:	+0dB/-0.3dB (JEITA)
40kHz:	+0dB/-2.0dB (HP output, JEITA)

S/N ratio

101 dB or higher	(MIC/LINE input to LINE OUT, gain knob at MIN, JEITA)
------------------	---

Distortion

0.003% or less	(MIC/LINE input to LINE OUT, 1kHz sine wave, at nominal input level and maximum output level, JEITA)
----------------	--

Crosstalk

95 dB or more	(MIC/LINE input to LINE OUT, 1 kHz, JEITA)
---------------	--

Computer system requirements

Check the TEAC Global Site [for the latest information about supported operating systems.](#)

Windows

Supported operating systems

Windows 10 32-bit
 Windows 10 64-bit
 Windows 8.1 32-bit
 Windows 8.1 64-bit
 Windows 7 32-bit SP1 or later
 Windows 7 64-bit SP1 or later
 (Windows 8, Windows Vista and Windows XP are not supported)

Computer hardware requirements

Windows computer with a USB 2.0 port

CPU/processor speed

2 GHz or faster dual core processor (x86)

Memory

2 GB or more

CAUTION

Operation of this unit was confirmed using standard computers that meet the above requirements. This does not guarantee operation with all computers that meet the above requirements. Even computers that meet the same system requirements might have processing capabilities that differ according to their settings and other operating conditions

Mac

Supported operating systems

macOS Sierra (10.12 or later)
 OS X El Capitan (10.11 or later)
 OS X Yosemite (10.10 or later)
 OS X Mavericks (10.9.1 or later)
 OS X Mountain Lion (10.8.4 or later)

Computer hardware requirements

Mac with a USB 2.0 port

CPU/processor speed

2 GHz or faster dual core processor

Memory

2 GB or more

iOS devices

Apple devices running iOS 7 or later

Supported audio drivers

Windows: ASIO2.0, WDM, MIDI
 Mac: Core Audio, Core MIDI

General

Power

US-2x2: Supplied by computer over USB*
 US-4x4: Dedicated AC adapter (PS-P1220E, DC12V)

* An external power supply device is necessary when using this unit with an iOS device. We highly recommend using a PS-P520E AC adapter or BP-6AA battery pack (both sold separately). When using another external power supply device, use one with the following specifications.

- Power supply voltage: 5 V
- Power supply current: 700 mA or more

Power consumption

US-2x2: 2.5 W
 US-4x4: 5 W

External dimensions

US-2x2: 186 × 65 × 160 mm (width × height × depth)
 US-4x4: 296 × 65 × 160 mm (width × height × depth)

Weight

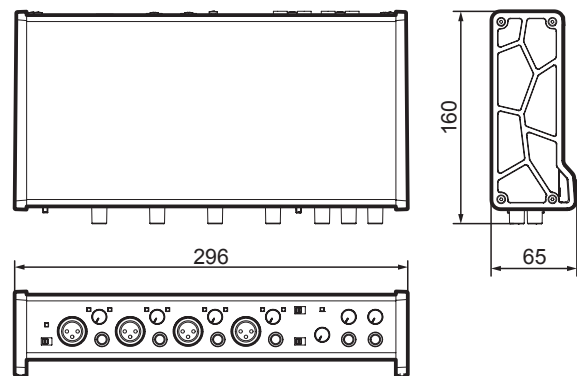
US-2x2: 1.1 kg
 US-4x4: 1.6 kg

Operating temperature range

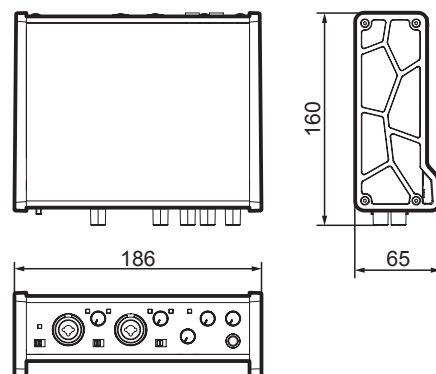
5–35 °C

Dimensional drawings

■ US-4x4



■ US-2x2



- Illustrations in this reference manual might differ in part from the actual product.
- Specifications and external appearance might be changed without notification to improve the product.

TASCAM

TEAC CORPORATION

Phone: +81-42-356-9143

1-47 Ochiai, Tama-shi, Tokyo 206-8530 Japan

TEAC AMERICA, INC.

Phone: +1-323-726-0303

1834 Gage Road, Montebello, California 90640 USA

TEAC MEXICO, S.A. de C.V.

Phone: +52-55-5010-6000

Río Churubusco 364, Colonia Del Carmen, Delegación Coyoacán, CP 04100, México DF, México

TEAC UK Ltd.

Phone: +44-8451-302511

2 Huxley Road, Surrey Research Park, Guildford, GU2 7RE, United Kingdom

TEAC EUROPE GmbH

Phone: +49-611-71580

Bahnstrasse 12, 65205 Wiesbaden-Erbenheim, Germany

TEAC SALES & TRADING(SHENZHEN) CO., LTD

Phone: +86-755-88311561~2

Room 817, Block A, Hailrun Complex, 6021 Shennan Blvd., Futian District, Shenzhen 518040, China
